

HEIM Teflon Lined Stainless Steel Rod Ends

The HEIM **HMTxSS** and **HFTxSS Series** combines the benefits of both a corrosion resistant 17-4 stainless body and race with a Teflon liner system.



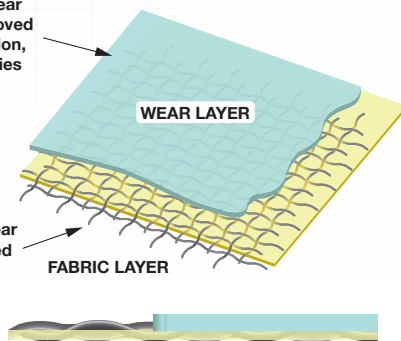
The **HEIM HMTxSS & HFTxSS Series** handles high radial loads and maintains dimensional stability under stress. By the addition of a PTFE liner system seen in these parts, you add another level of robustness by reducing friction and wear between the ball and race. This low-friction, self-lubricating rod end is a great high-performance choice for those demanding applications.

Product Features and Benefits:

- ✓ Good load bearing and anti-friction properties
- ✓ Teflon liner offers low coefficient of friction
- ✓ Self-Lubricating (No Sticky Grease)
- ✓ Dry system that avoids contaminant build up
- ✓ Eliminates metal to metal contact
- ✓ Reduced wear & Extended life
- ✓ Maintenance Free
- ✓ Used for higher strength applications
- ✓ Tight ball-to-race clearances reducing play
- ✓ Multiple sizes and configurations (Male/Female/RH/LH)

PTFE enriched wear coat provides improved compression, friction, and wear properties

Fabric provides shear strength & improved bond strength



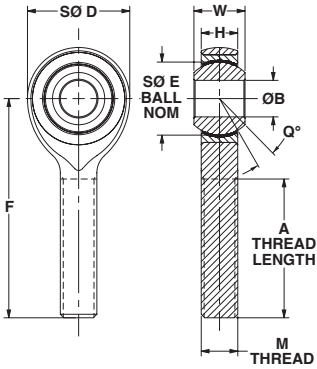
Applications:

- ✓ Meat and food processing
- ✓ Packaging equipment
- ✓ Medical equipment
- ✓ Marine applications
- ✓ Machine washdown applications
- ✓ Frozen food processing equipment



RBC Bearings® has been producing bearings in the USA since 1919. In addition to unique custom bearings, RBC Bearings® offers a full line of standard industrial and aerospace bearings, including:

HMTxSS Series – In Stock Now!



PART NUMBER	B	W	H	D	F	A	M	E	Q°	Ultimate Static Radial Load lbf	No Load Breakaway Torque in-lbs	Approx Weight lbs
HMT3SS	0.1900 +0.0025 -0.0005	0.312 +0.005 -0.005	0.250 +0.010 -0.010	0.625 +0.031 -0.031	1.250 +0.015 -0.015	0.750 MIN	0.1900-32 UNF-3A	0.437 NOM	10.5 NOM	2393	0.5 - 5.0	0.03
HMT4SS	0.2500	0.375	0.281	0.750	1.562	1.000	0.2500-28	0.500	14.0	4424	0.5 - 5.0	0.04
HMT5SS	0.3125	0.437	0.344	0.875	1.875	1.250	0.3125-24	0.625	10.5	6107	0.5 - 5.0	0.07
HMT6SS	0.3750	0.500	0.406	1.000	1.938	1.250	0.3750-24	0.718	9.5	7856	1.0 - 8.0	0.11
HMT7SS	0.4375	0.562	0.437	1.125	2.125	1.375	0.4375-20	0.812	11.0	8430	1.0 - 8.0	0.16
HMT8SS	0.5000	0.625	0.500	1.312	2.438	1.500	0.5000-20	0.937	9.5	13442	1.0 - 8.0	0.25
HMT10SS	0.6250	0.750	0.562	1.500	2.625	1.625	0.6250-18	1.125	11.5	14877	1.0 - 8.0	0.38
HMT12SS	0.7500	0.875	0.687	1.750	2.875	1.750	0.7500-16	1.312	10.0	22916	1.0 - 8.0	0.60
HMT16SS*	1.0000	1.375	1.000	2.750	4.125	2.125	1.250-12	1.875	14.5	74164	1.0 - 24.0	2.41

Part No. Code:

HMT | **L** | **x** | **SS**

Stainless Steel

Ø BORE IN MULTIPLES OF 1/16 INCH

" " = RIGHT HAND THREAD (NO CODE)

"L" = LEFT HAND THREAD

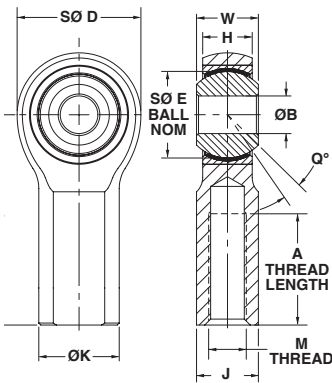
BASIC PART No.

Materials:

- Rod End Body:** Stainless Steel, Heat Treated
- Ball:** Stainless Steel, Heat Treated, Chrome Plated
- Race:** Stainless Steel, Heat Treated
- Liner:** PTFE

*Size 16: Dim H tolerance changes to ±0.010
Dim D & F tolerance change to ±0.020

HFTxSS Series – In Stock Now!



PART NUMBER	B	W	H	D	F	A	M	E	J	K	Q°	Ultimate Static Radial Load lbf	No Load Breakaway Torque in-lbs	Approx Weight lbs
HFT3SS	0.1900 +0.0025 -0.0005	0.312 +0.005 -0.005	0.250 +0.010 -0.010	0.625 +0.031 -0.031	1.062 +0.015 -0.015	.562 MIN	0.2500-32 UNF-2B	0.406 +0.010 -0.010	0.312 +0.010 -0.010	0.437 NOM	10.5 NOM	2323	0.5 - 5.0	0.04
HFT4SS	0.2500	0.375	0.281	0.750	1.312	.750	0.2500-28	0.468	0.375	0.500	14.0	4776	0.5 - 5.0	0.06
HFT5SS	0.3125	0.437	0.344	0.875	1.375	.750	0.3125-24	0.500	0.437	0.625	10.5	5638	0.5 - 5.0	0.09
HFT6SS	0.3750	0.500	0.406	1.000	1.625	.937	0.3750-24	0.687	0.562	0.718	9.5	7856	1.0 - 8.0	0.15
HFT7SS	0.4375	0.562	0.437	1.125	1.812	1.062	0.4375-20	0.750	0.625	0.812	11.0	8430	1.0 - 8.0	0.20
HFT8SS	0.5000	0.625	0.500	1.312	2.125	1.187	0.5000-20	0.875	0.750	0.937	9.5	13442	1.0 - 8.0	0.33
HFT10SS	0.6250	0.750	0.562	1.500	2.500	1.500	0.6250-18	1.000	0.875	1.125	11.5	14877	1.0 - 8.0	0.48
HFT12SS	0.7500	0.875	0.687	1.750	2.875	1.750	0.7500-16	1.125	1.000	1.312	10.0	22916	1.0 - 8.0	0.72
HFT16SS*	1.0000	1.375	1.000	2.750	4.125	2.125	1.250-12	1.625	1.500	1.875	14.5	70261	1.0 - 24.0	2.13

Part No. Code:

HFT | **L** | **x** | **SS**

Stainless Steel

Ø BORE IN MULTIPLES OF 1/16 INCH

" " = RIGHT HAND THREAD (NO CODE)

"L" = LEFT HAND THREAD

BASIC PART No.

Materials:

- Rod End Body:** Stainless Steel, Heat Treated
- Ball:** Stainless Steel, Heat Treated, Chrome Plated
- Race:** Stainless Steel, Heat Treated
- Liner:** PTFE

*Size 16: Dim H tolerance changes to ±0.010
Dim D & F tolerance change to ±0.020
Dim J & K tolerance change to ±0.015



Smoother. Faster. Longer. Because That's How We Roll.

www.rbcbearings.com 800.356.6584



This document contains a general overview of the products and features described herein. It is solely for informational purposes, does not represent a warranty of the information contained herein, and is not to be construed as an offer to sell or a solicitation to buy. Contact RBC Bearings® for detailed information suitable to your specific applications. RBC Bearings® reserves the right to modify its products and related product information at any time without prior notice. Some of the products listed herein may be covered by one or more issued and pending U.S. or foreign patents. Contact RBC Bearings® for product specific information - or see rbcbearings.com/patents/